

London
June 2018

Ian Cross, Managing Director
Moyes & Co

High-impact Opportunities



Moyes & Co.

Selection of Opportunities Available

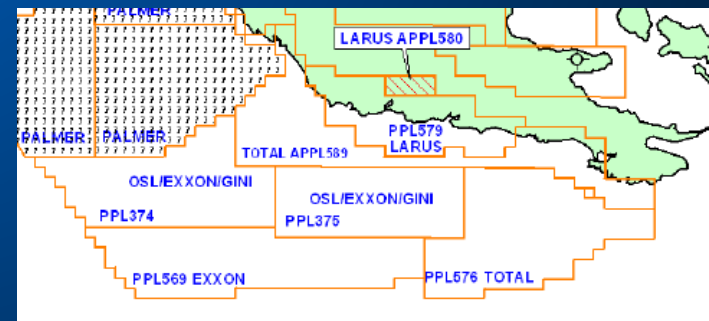
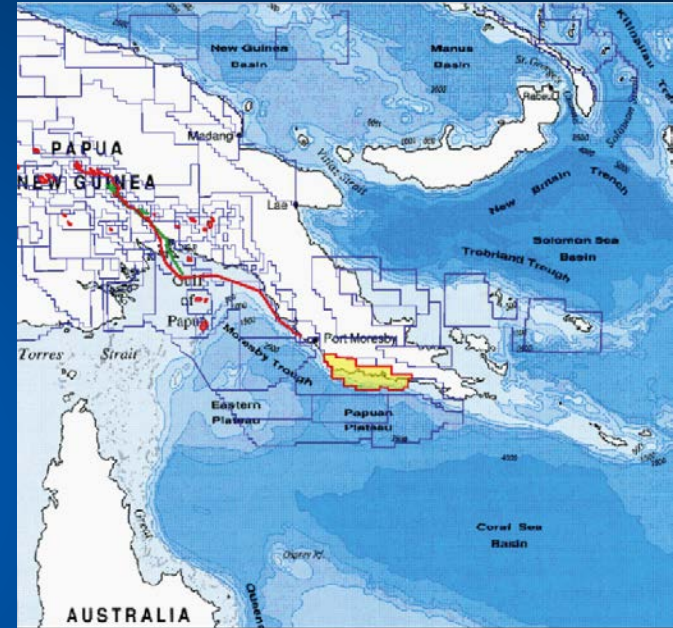
- Alaska - NANA
- Argentina – Retama
- Argentina – President
- Australia – AWE Ltd
- Australia – Bridgeport
- Australia – Norwest
- Australia – Mosman
- Canada – Bounty
- Colombia – Telpico
- Laos – CamCan
- Oman - HCF
- Indonesia – Azipac
- Indonesia – PT Kalisat Energi
- Indonesia – Transform
- PNG – Larus Energy
- UK – Warwick



PNG – PPL 579



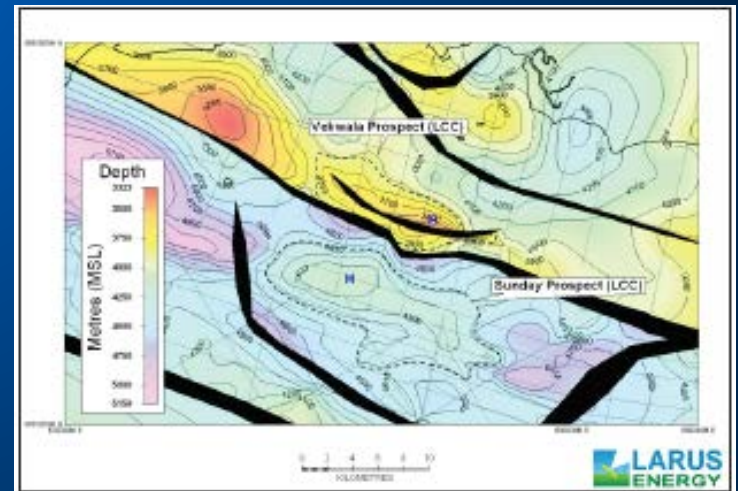
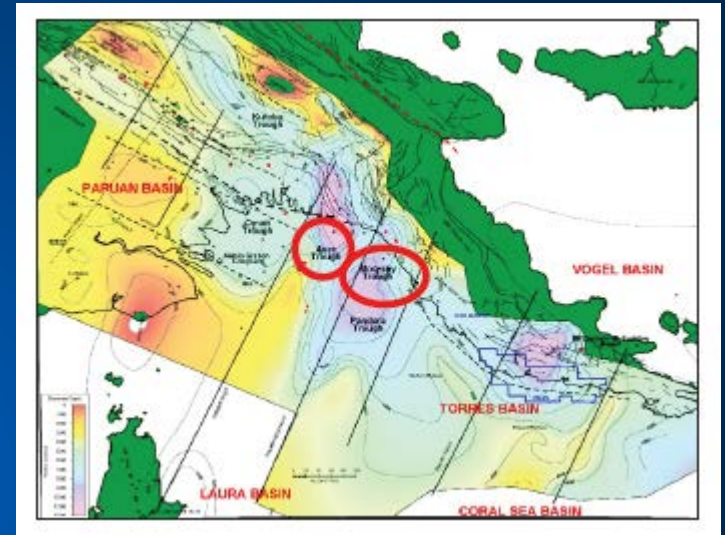
- Undrilled Torres Basin
- 6-8km of sediments
- On and offshore
- Heavily licensed area
- Three 2D surveys completed
- Oil seeps being analysed
- More seismic planned
- Well in 2020-2021



PNG – PPL 579



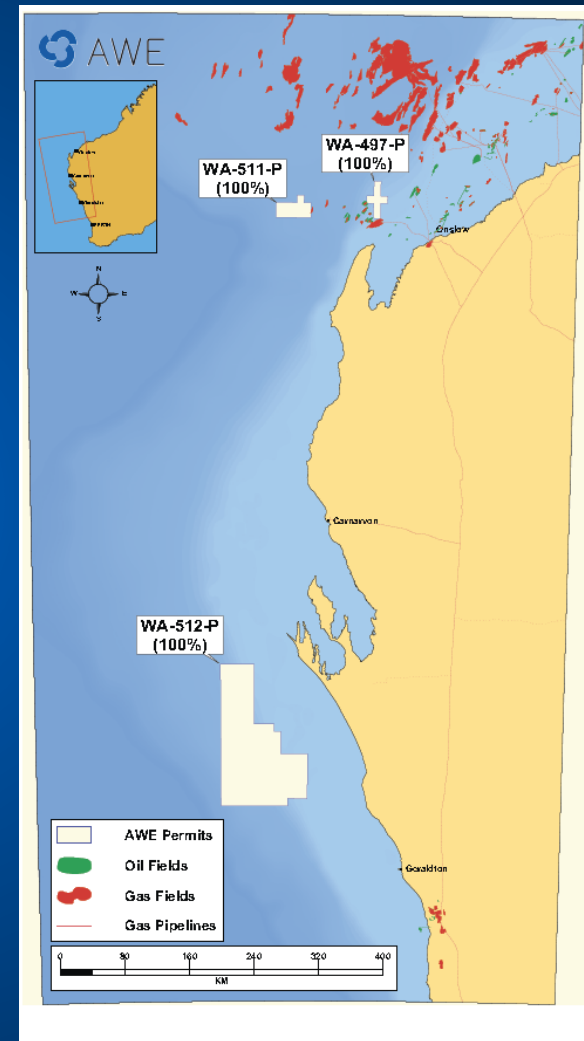
- Stacked overthrust Tertiary overlies Mesozoic succession
- Jurassic, Cretaceous and Tertiary targets
- Mesozoic and Early Tertiary sources possible
- High-graded leads include:
 - Vekwala, 42m of water, PTD 3,600m
 - Sunday, 600m of water, PTD 3,000m



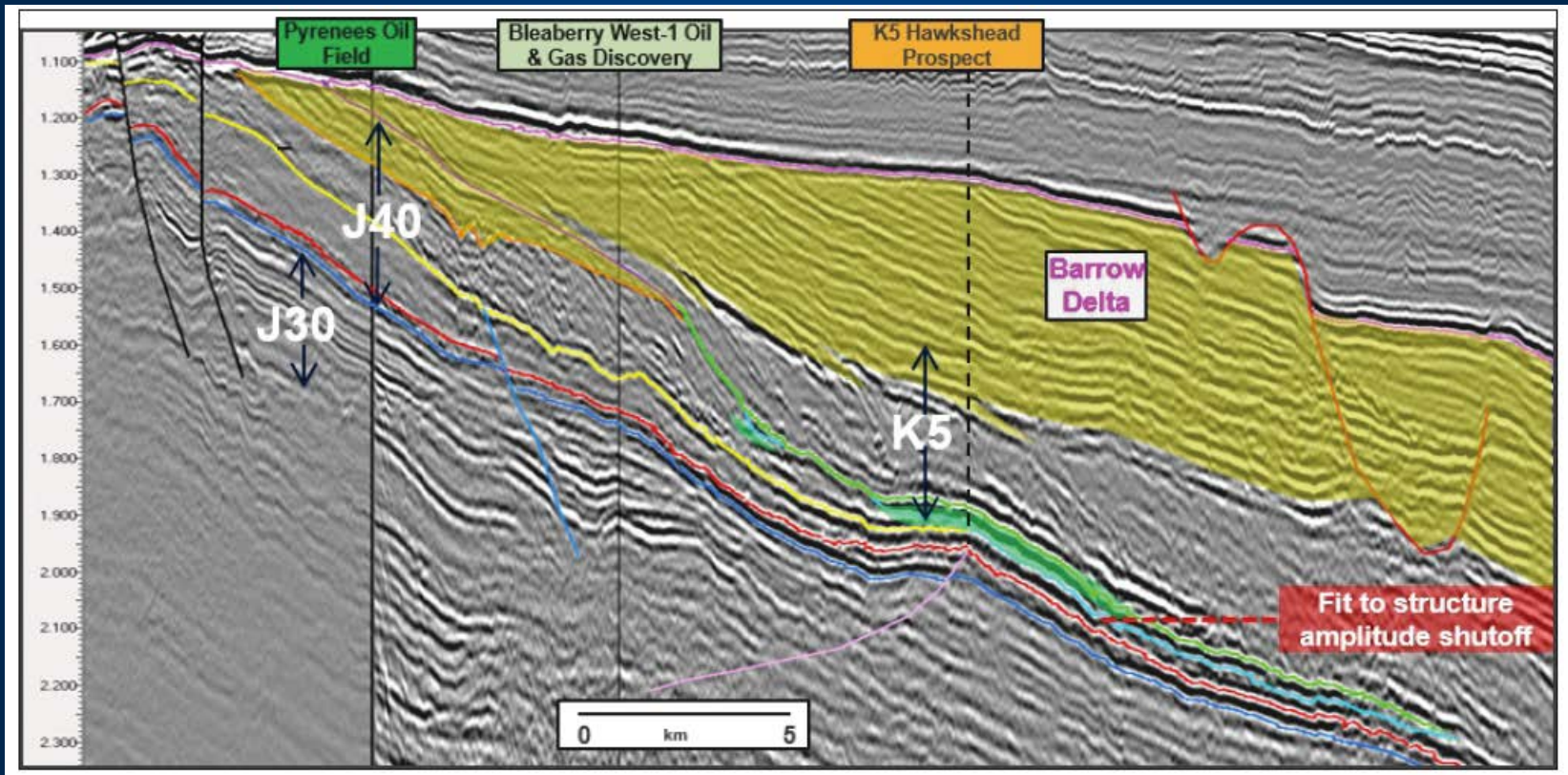
Australia – Offshore permits



- Diverse portfolio of assets
- WA- 497-P and WA-512-P
- North Carnarvon and North Perth Basins
- High-impact prospectivity
- Number of structural and stratigraphic targets
- Purchase/acquire new seismic
- Drilling from 2019



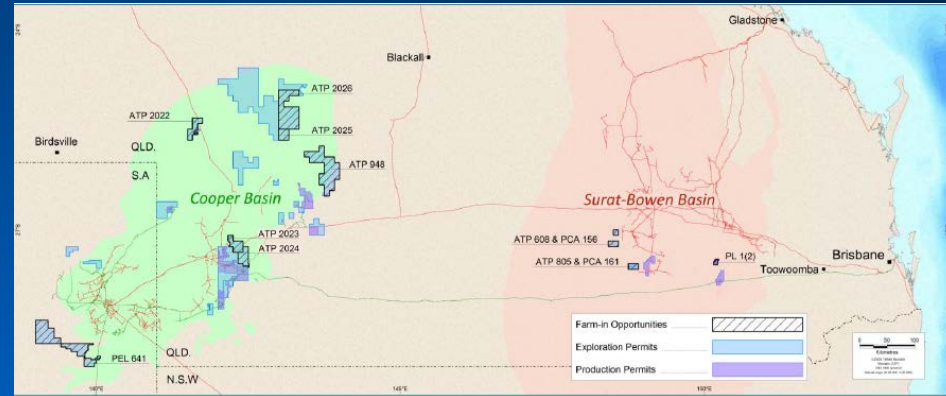
Australia – WA-497-P



- Cabot (J40) and Hawkshead (K5) can be tested by the same well
- 900 million barrel oil potential

Australia – Queensland & South Australia

- Cooper-Eromanga and Surat-Bowen Basins
- Focus on overlooked basin margin plays
- On trend with proven fields
- Multiple objectives
 - Permian to Cretaceous
- Includes Toolebuc Shale Project (ATP 2026)
 - 400 MMBOE at 1,500m
 - Obelix-1 success in 2017



Bridgeport Exploration Properties for Farm-out

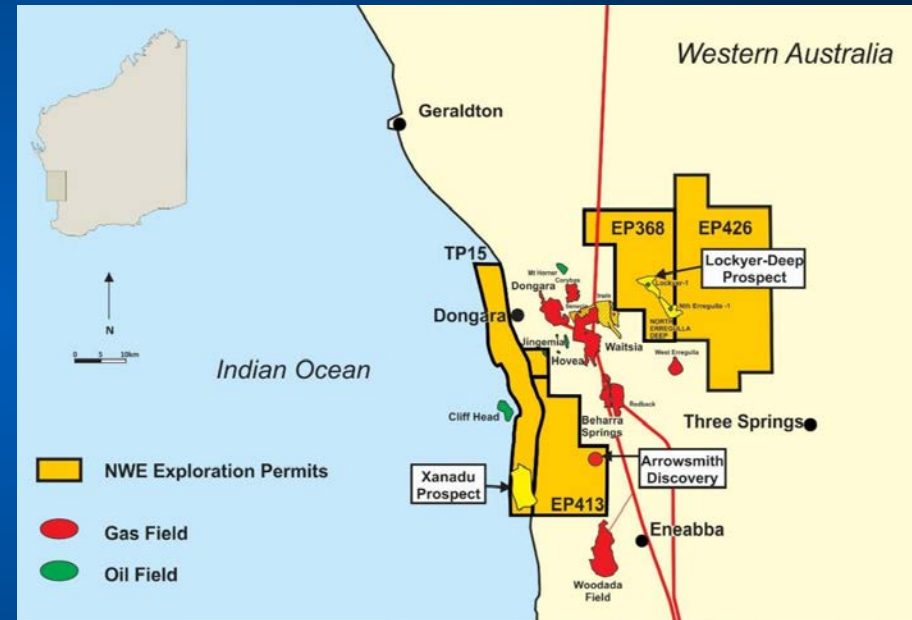
Permits	Tenement Life	Area (km ²)	BEL WI	Available for farm-in
ATP 948 (Qld)	1st period - 01/06/14 - 31/05/20	2000	100%	20 ≤ 50%
PEL 641 (SA)	Awaiting grant - 12 year tenement	1950	100%	20 ≤ 50%
ATP 2026 Barcoo (Qld)	PCA Under Application - Pending	1650	100%	20 ≤ 50%
ATP 2022 Inland (Qld)	Awaiting grant - 12 year tenement	400	100%	≤ 50%
ATP 269 Eromanga (Qld)	1st period - 01/06/14 - 31/05/20	390	100%	20 ≤ 60%
ATP 608 Stratton N. (Surat) (Qld)	3rd period - 01/12/14 - 30/11/18	80	100%	20 ≤ 60%
ATP 608/PCA 156 (Surat) (Qld)	PCA period - 12/04/17 - 12/03/27	150	100%	20 ≤ 60%
ATP 805/PCA 161 (Surat) (Qld)	PCA period - 01/09/17 - 31/08/22	150	100%	20 ≤ 60%



Australia – TP/15



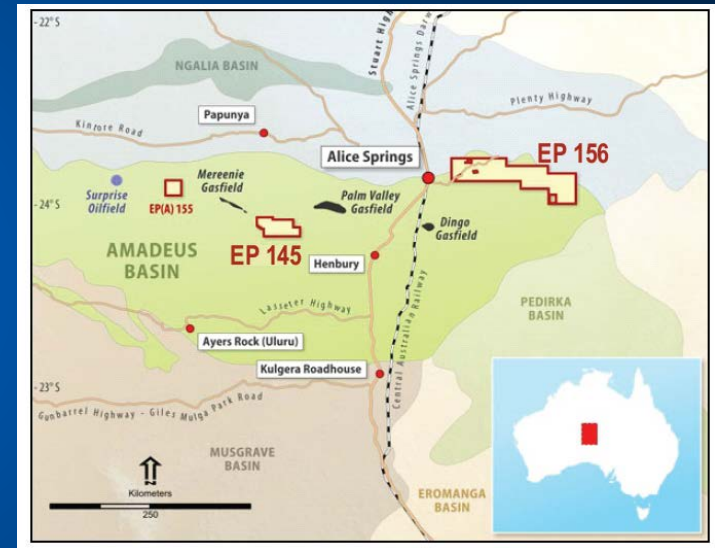
- Offshore permit in the Perth Basin
- Xanadu-1 oil discovery made in 2017
- Similarities with Cliff Head
- Oil could be processed seamlessly with Cliff Head facilities
- 3D seismic planned in 2018
- Appraisal drilling in 2019



Australia – EP 145

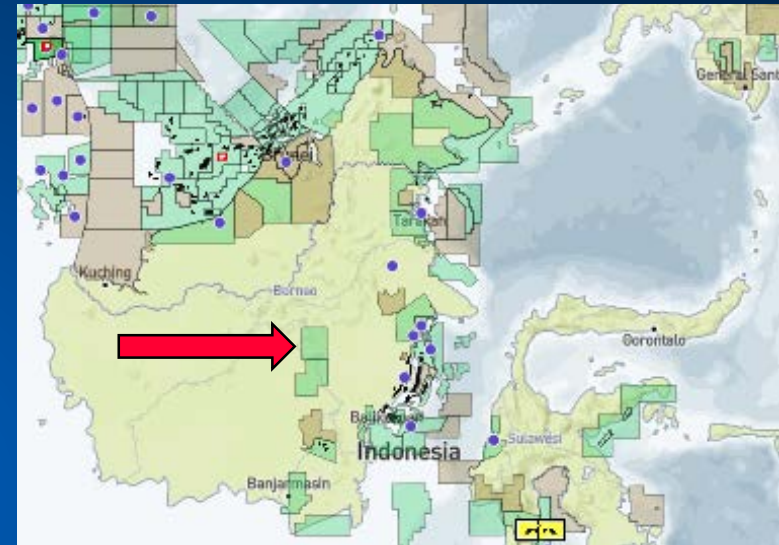


- Located in Amadeus Basin
- Conventional oil and gas potential
- Proven petroleum system within the permit
 - West Walker-1 gas discovery - potential OGIP of 69 BCF
- Subsalt potential identified in the permit
- MOG is seeking a partner to fund acquisition of 100km 2D seismic



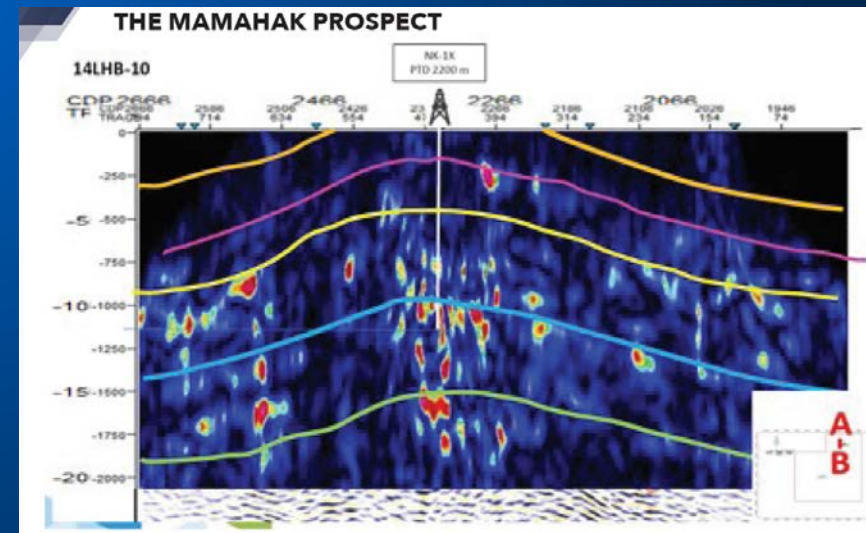
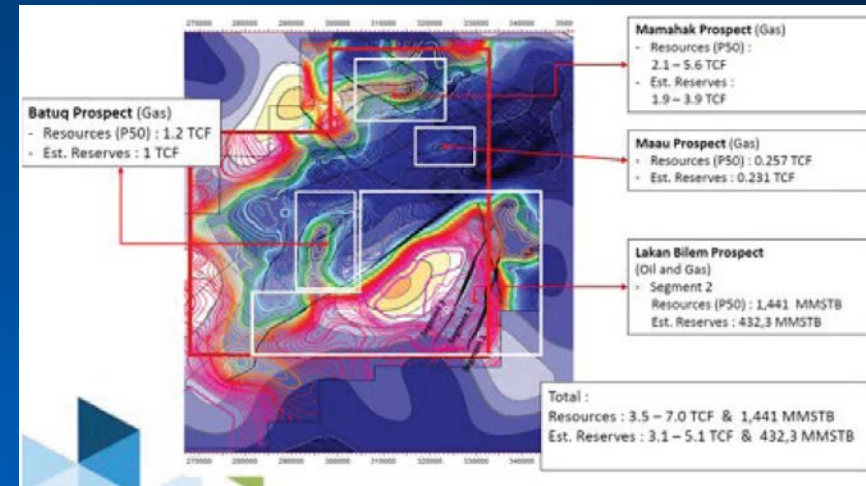
Indonesia – Long Hubung Long Bagun PSC

- PT Kalisat Energi Nusantara
- Upper Kutai Basin, onshore Kalimantan
- Area seen little exploration
 - 1939-1942: BPM-Shell drilled on Mamahak, with gas blowout
 - 1987: Elf drilled Batuq-1
- PSC contains one of largest undrilled features onshore SE Asia



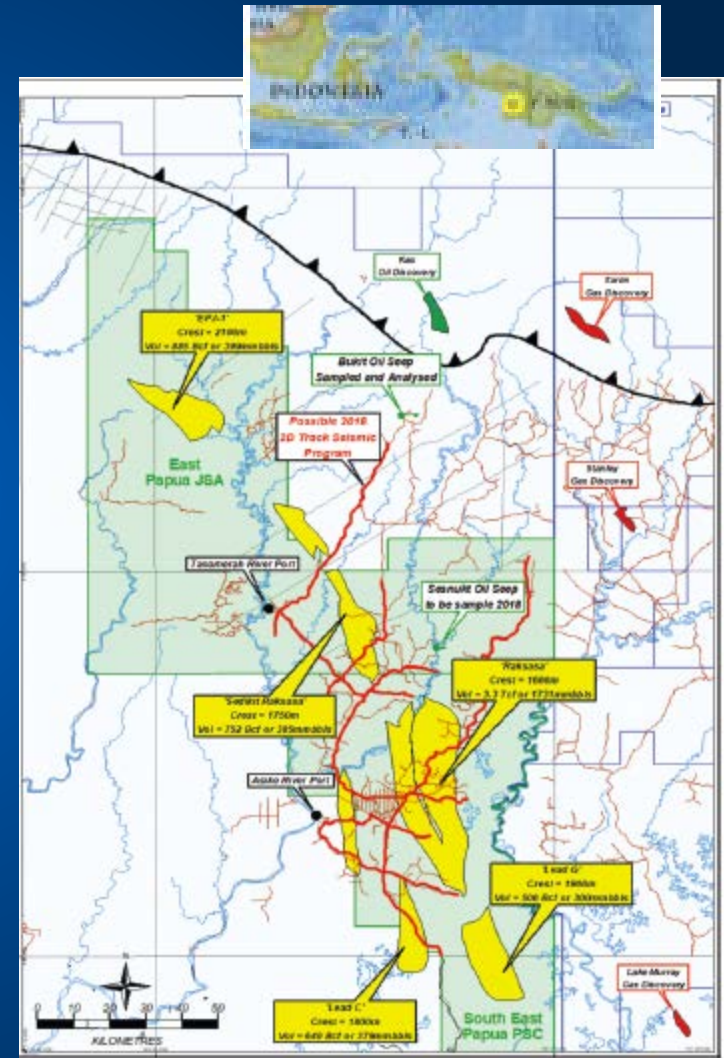
Indonesia – Long Hubung Long Bagun PSC

- Proven petroleum system
- Eocene sandstones main objective
- Two main prospects with significant resources of 3.5 TCF and 1.5 billion barrels oil
- Wildcat planned in early 2019
- US\$9 million with PTD 2,200m



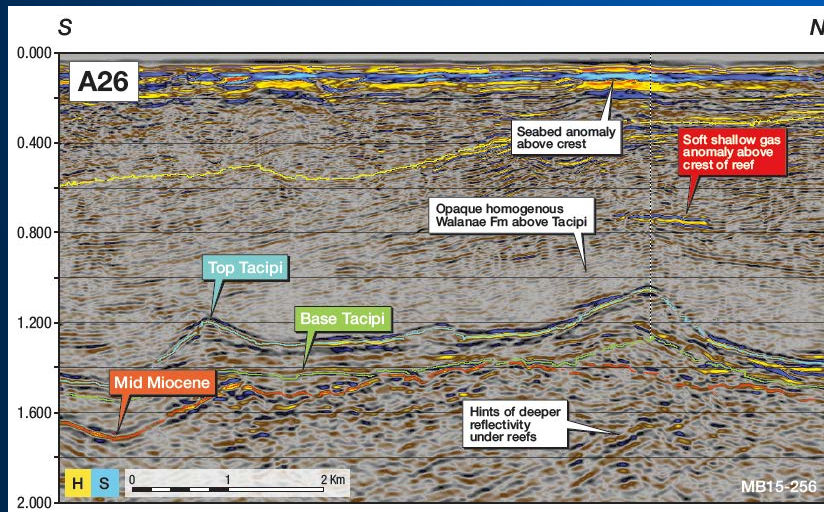
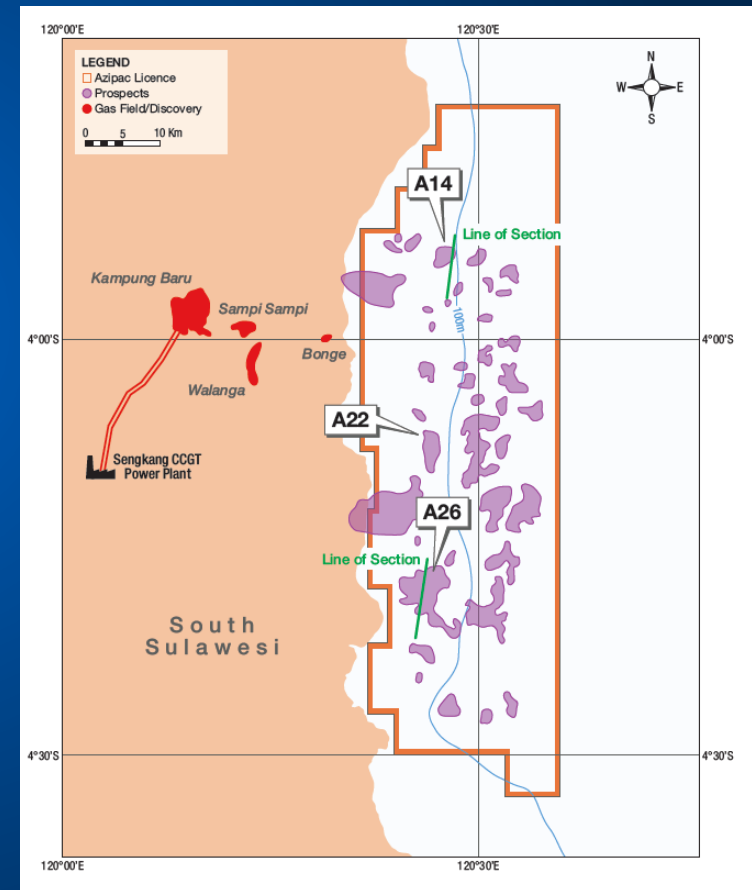
Indonesia – SE Papua PSC

- Comprises one PSA and East Papua JSA
- Contiguous with hydrocarbon provinces of PNG
- Under-explored “border play”
- Similar geology and multi-TCF and +100 MMB liquids potential
- Low work obligations
- Seismic planned in 2018



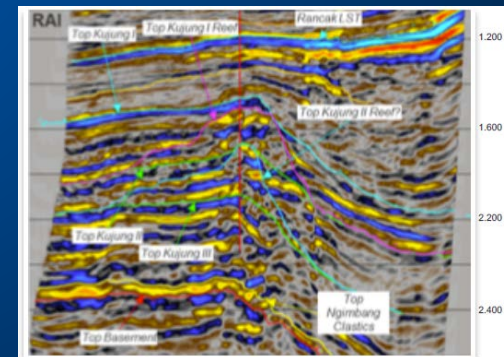
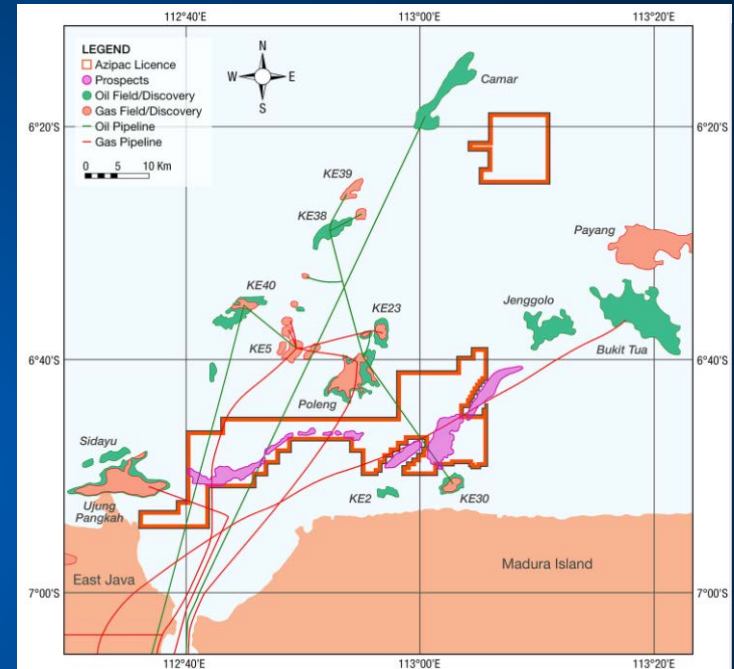
Indonesia – Bone PSC

- Offshore Bone Basin, South Sulawesi
- On trend with producing gas fields in adjacent Sengkang PSC
- Miocene reef objectives
- Drill ready prospects with mutli-TCF potential



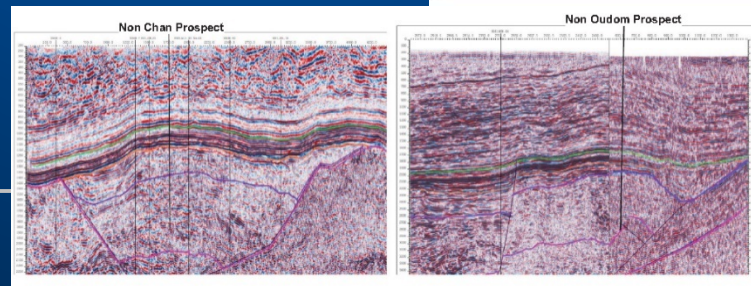
Indonesia – North Madura PSC

- East Java Sea
- Ratna-1 planned early 2019
- Nearby existing infrastructure including Ujung Pangkah and KE5
- Test extension of Kujung trend
- 450 BCFG prospect
- USD8 million to drill (dry hole)
- Follow on Mondung prospect within PSC



Laos – Savannakhet PSC

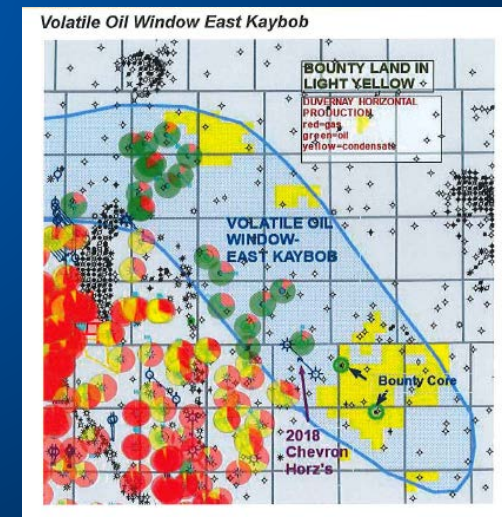
- Covers most of the Savannakhet Basin, on eastern Khorat Plateau
- Only one well, Bang Nouan-1, gas shows
- Permian carbonates and Triassic sand are main objectives
- Non Chan (400 BCF), Savannakhet (260 BCF), Non Oudom (700 BCF) and Dong Phao (380 BCF)
- 2D planned to firm up well locations
- Productive on Thai side, and gas in wells close to edge of block



Canada – Kaybob Basin - Alberta



- Bounty has the only large available blocks of undeveloped Duvernay rights in the Kaybob Basin
- Acreage has all the criteria needed for a World Class shale project
- Late Devonian play which is liquids rich
- Considered one of the top six largest in North America
- “.....the Duvernay can be the Permian Basin of the north”





Ian Cross, Managing Director
Moyes & Co

icross@moyesco.com

+65 97760753



Moyes & Co.